

# INSTALLATION INSTRUCTIONS

## C-DMM-3015 Flip up Dash Monitor Mount 2020-2021 Ford Interceptor Utility

**TOOLS REQUIRED:**

- Ratchet Wrench
- Socket Set
- 7/16" Open End Wrench
- Phillips Screwdriver (short)
- Dash panel removal tool
- Wire strippers/cutters

**HARDWARE and PARTS:**

<u>QTY</u>	<u>DESCRIPTION</u>	<u>PART#</u>
1	Main upper mounting tray	23633
1	VESA rotator plate	22607
2	1/4" x 3/4" Carriage bolts	16223
1	PVC washer	22608
2	1/4" Thin Nylock nut	16009
2	1/4" Plastic flat washer	13406
2	1/4" Steel flat washer	16122
2	Lower mounting clamps	23634
2	1/4" Nylock nut	16008
4	1/4" Serrated nut	16013
2	1/4" x 1/2" Carriage bolt	16222
2	M5 x 30mm Machine screw	16553
2	1/4" plastic spacer	16732
2	Plastic cap for lower mount tabs	16769
4	8-32 x 3/4" Machine screw	16393
2	1/4" Fender washer	16130
4	#8 Star washer	16146

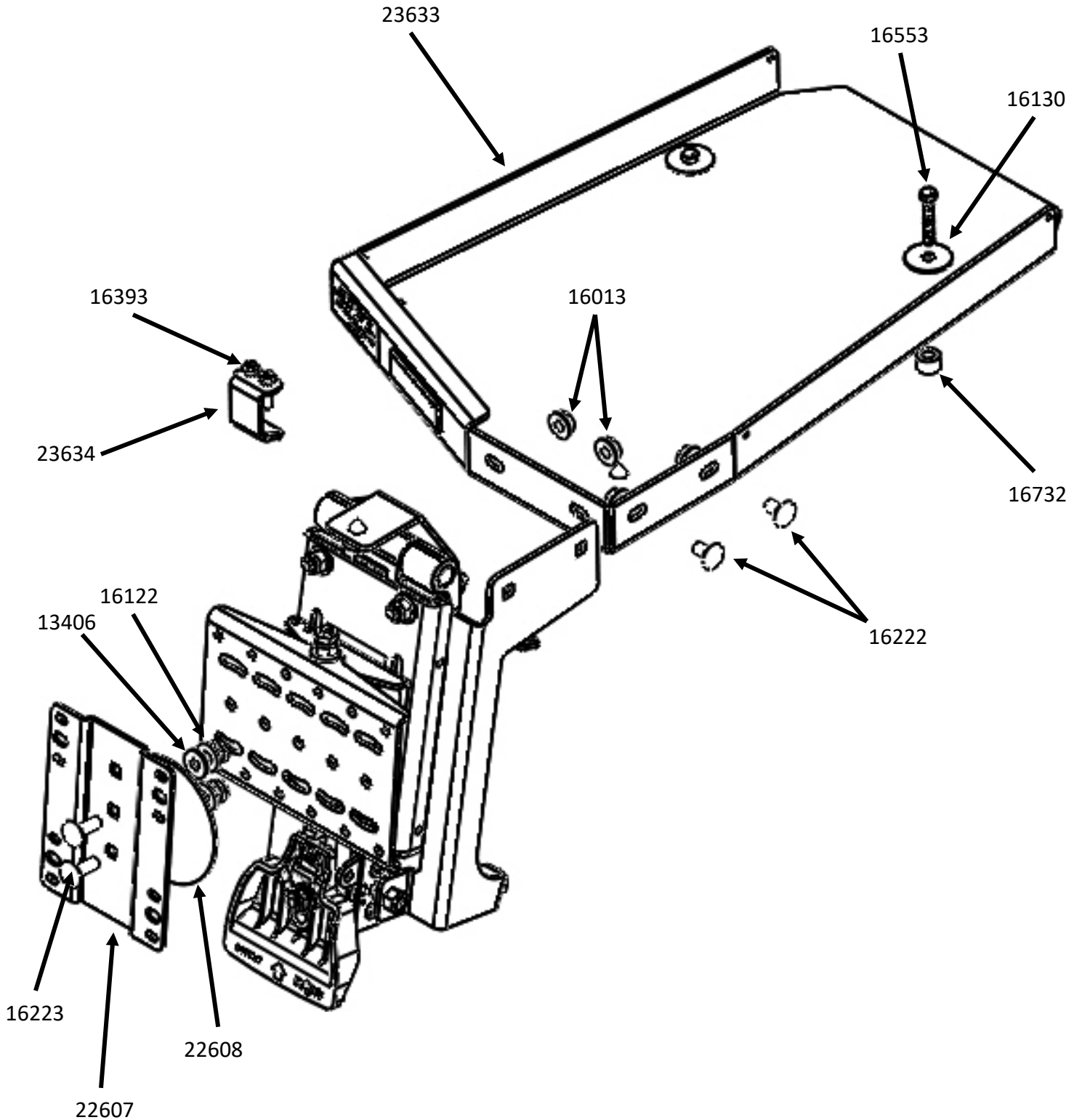
*Notes:*

1. *The C-DMM-3000 swivel plate accepts C-MM-301 offset bracket used with C-MM-2XX adaptors.*
2. *C-MM-2XX series adaptor brackets are not needed for most VESA 75 and other Havis Docking Station mounting applications.*
3. *CM010471 VESA rotator plate gives additional positioning options, but is not required depending on mounting preference.*

**ALWAYS!**

- **Read all instructions before installing any Havis, Inc products.**
  - **Use hardware provided with install kit**

**C-DMM-3015**  
**Assembly**

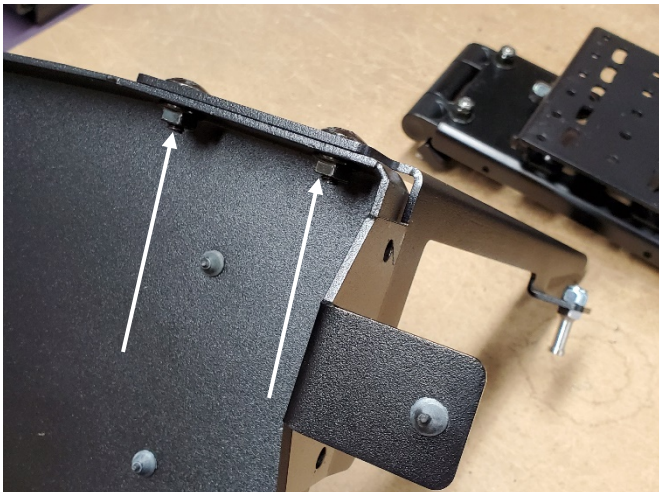




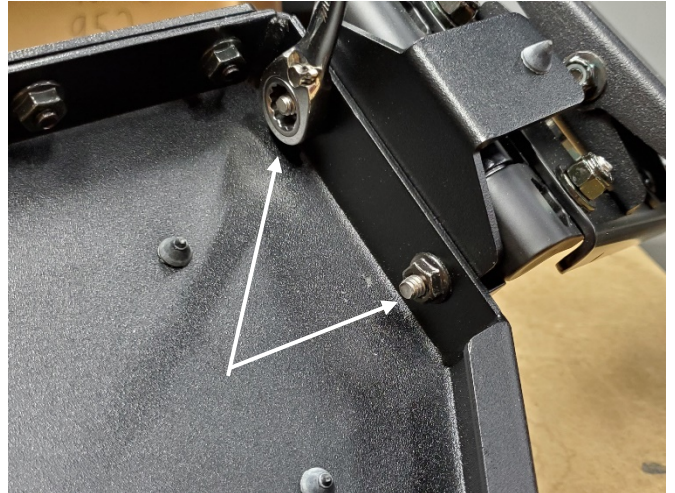
View of Interceptor Utility dash before installation



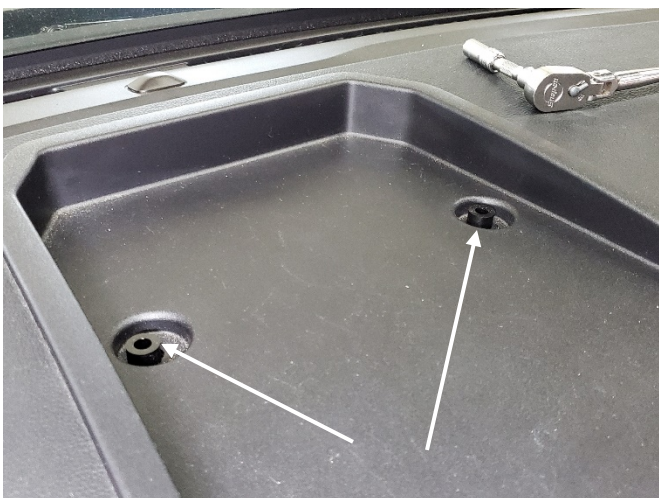
The C-DMM-3015 will need to be assembled when removed from shipping box.



Attach lower mounting support arm to main tray using 1/4" x 1/2" carriage bolts and serrated nuts.



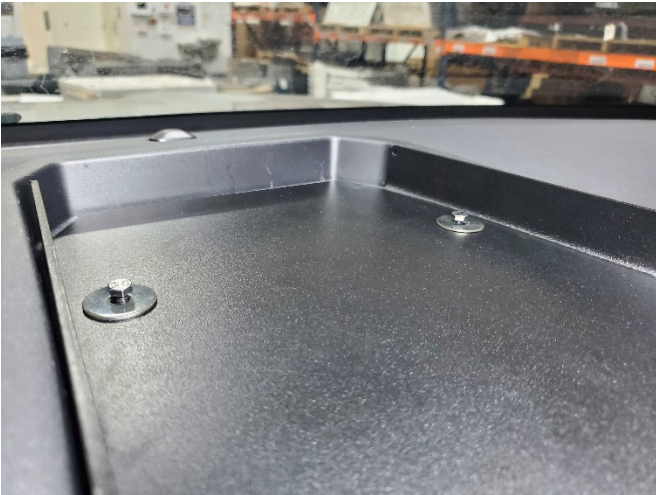
Attach hinge assembly to main tray using 1/4" serrated nuts.



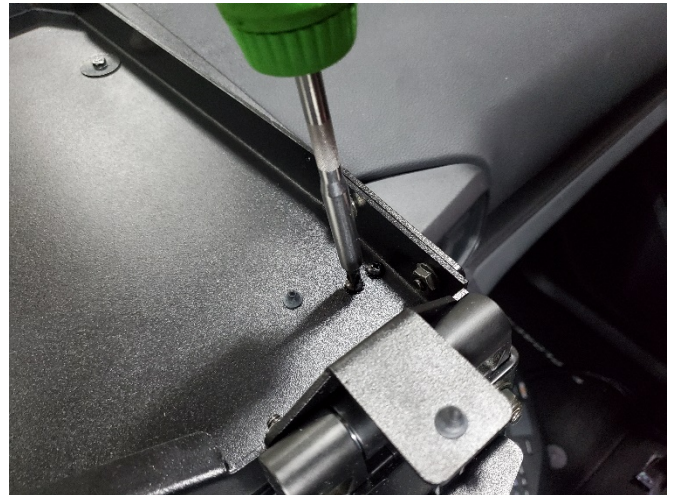
Remove OEM fasteners from upper dash pocket.  
Place plastic spacers over openings.  
(7mm socket)



Place DMM tray onto upper dash and push towards the windshield. Lower mounting tabs should sit around trim by vents as shown.



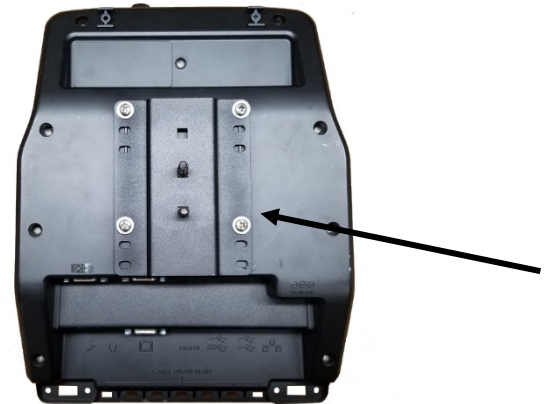
Place M5 x 30mm bolts and flat washers in top of tray, through spacers, and into the OEM clips. Tighten hardware.



Tighten lower mounting tabs using 8-32 x 3/4" screws and star washer.



Test up and down motion of the arm and confirm smooth operation.



Position VESA plate on back of Device as desired. Attach VESA plate with carriage bolts to the back of the dock. The gray PVC washer will go between this bracket and the DMM swivel plate.



Determine desired position for your specific computer and attach to DMM swivel plate using 1/4" x 3/4" carriage bolts, PVC spacer, nylon washers, steel washers, and nylock nuts. Tighten so that the dock rotates smoothly.



Dock the computer and test. Installation is now complete.